

# SMM Database-Pro Excel Add-in

## Installation Guide

The Excel Add-in is an auxiliary processing tool for Database-Pro of Shanghai Metals Markets (SMM).

### System Requirements

Available on: PC

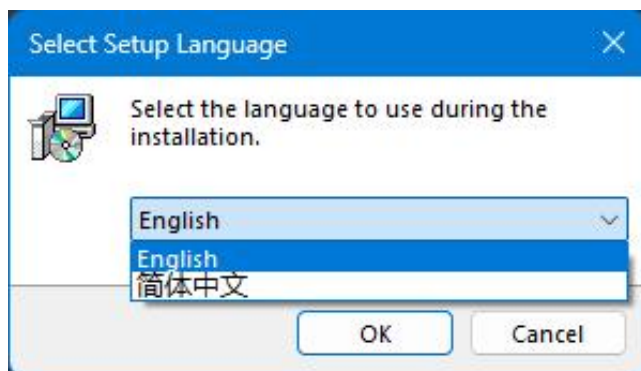
Architecture: x86 x64

OS: Windows 7 or later (Windows10 recommended)

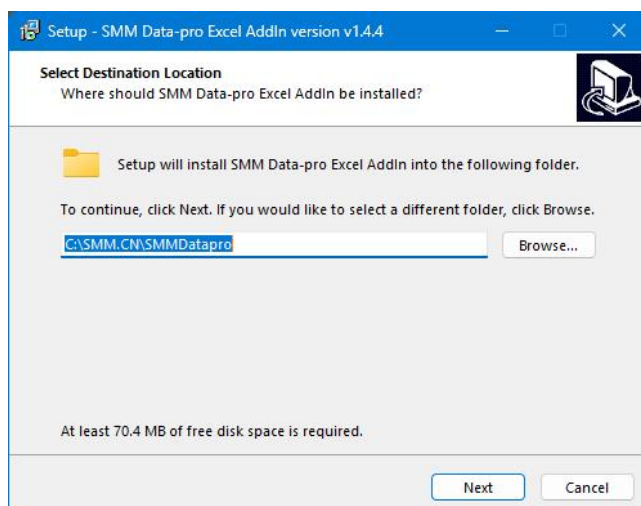
Office: Office 2007 or later (Office2016 recommended)

### Installation Guide

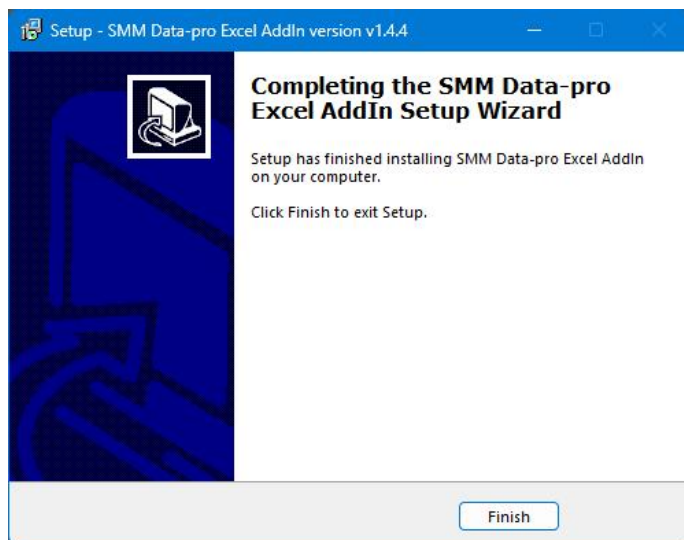
1. Choose your language for the installation process. Both English and Chinese are available.



2. Choose an installation directory. We recommend keeping the default setting.



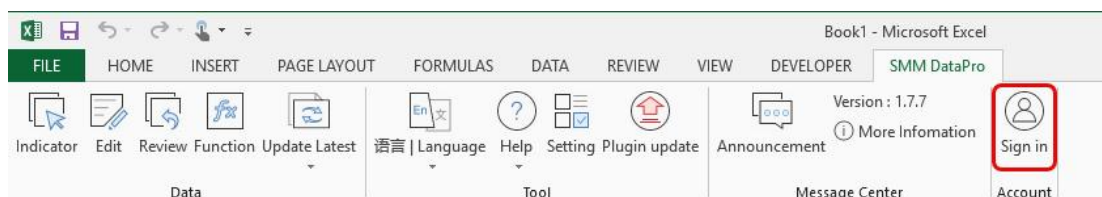
### 3. Click 'Finish'



## Sign in

Please sign in with the same account you use for signing into data-pro.metal.com. If you encounter any issues, please contact your SMM sales representative or customer service.

### 1. Click 'Sign in' to open the login pop-up window.



2. Enter your username and password, then click 'OK'. If the 'Remember me' is checked, the Excel add-in will sign in automatically upon the next startup, eliminating the need to manually enter your password again.



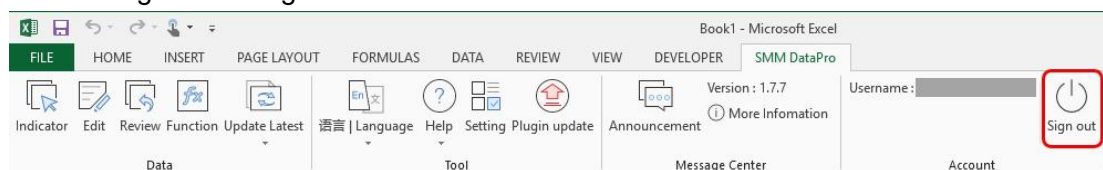
3. Click 'Login Settings' to set up a proxy for this login.



The screenshot shows a 'Sign in' dialog box with a 'Proxy Settings' section. On the left is the SMM logo with the text '上海有色网' and '中国权威金属门户'. The 'Proxy Settings' section includes a 'Type' dropdown menu set to 'HTTP1.0/1.1 Proxy', and input fields for 'Address', 'Port' (set to 80), 'User', 'Password', and 'Domain'. At the bottom are two buttons: 'No Proxy' and 'Confirm'.

4. If the username and password are correct and the service has been activated, the login will be completed.

5. Click 'Sign out' to log out.



**Attention: You must be logged in to select indicators or update data.**